



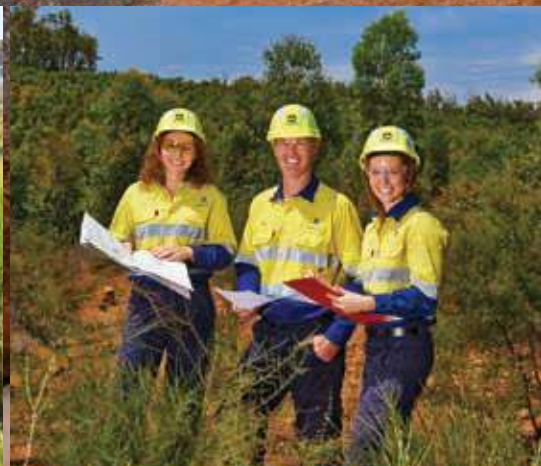
INVESTING IN

BETTER DECISIONS



THE WESTERN AUSTRALIAN BIODIVERSITY SCIENCE INSTITUTE





BALANCING CONSERVATION

AND ECONOMIC DEVELOPMENT

Western Australia is a state rich in mineral, oil and gas resources. With a thriving agricultural sector and a growing population, it is experiencing increasing levels of urban and industrial expansion. The challenge is to develop the State's resources while minimising adverse impacts on the environment.

The State has eight out of Australia's 15 declared biodiversity hotspots and one of the highest rates of new species discovery in the world. Due to the vastness of the State, rich biodiversity and a finite research capacity, there is a gap in knowledge about many species and ecosystems.

Relevant, timely and a more coordinated research effort is needed, along with better access to shared scientific knowledge. This will enable government, industry and community to make better decisions about conservation and economic development.



OUR VISION

High quality, relevant biodiversity knowledge that is readily accessible to industry, government and the broader community to better manage the State's biodiversity.



OUR PURPOSE

- Enable and support high quality end user driven research to address critical knowledge gaps.
- Deliver excellence and efficiencies in research by fostering constructive collaboration across sectors and between researchers.
- Ensure information is available in a form that is relevant and accessible to government policy makers, industry, land managers and other stakeholders.





ABOUT US

We are a joint venture between leading Western Australian research organisations. As a group, we supply world-class, independent scientific knowledge to industry, government, community and other end users of biodiversity knowledge to help them make more informed decisions about land use and biodiversity management.

Our comprehensive research plan reflects the biodiversity priorities in the State and we work in collaboration with leading experts to ensure that research is user-focused, scientific information accumulated is integrated for easy access and that research specifically addresses gaps in biodiversity knowledge.

WHAT WE DO

AND WHY



Enable relevant research to meet end user needs

WHAT

Our purpose is to enable collaborative research so it aligns with end user needs to deliver real world outcomes that can benefit business and community.

WHY

We know that a lack of information can hinder decisions about land use, conservation, regulation and management. Issues include:

- Insufficient information about the nature and distribution of WA's biodiversity.
- How to reduce threats to our ecosystems.
- How to restore and rehabilitate ecosystems and landscape.
- A lack of ready access to scientific information.



Bring the best expertise together to maximise research efficiencies

With a 'whole systems approach', we access relevant expertise from our partner organisations and bring together the very best team of researchers. This means we can deliver world class scientific excellence. Our executive team works with you to plan, scope and develop projects that address your specific needs about biodiversity in WA.

Our strategic approach and a sound understanding of biodiversity issues and priorities in the State allows us to reduce duplication of research effort, share information and deliver efficiencies in time and cost. Better coordination of research effort delivers results that are timely and relevant to your needs.



Facilitate better sharing of scientific information

We work in collaboration with leading expertise across the State to ensure that biodiversity data is accumulated and shared in a coordinated way. Our role includes the development of an information system to enable end users to readily access biodiversity information.

Sharing information that already exists can avoid costly duplication of research effort. Through our partnerships we can help you navigate knowledge that already exists, enabling you to make more informed management decisions.



DRIVEN BY THE NEEDS

OF END USERS

The formation of WABSI in 2015 was a result of extensive stakeholder consultation with leading resource companies, conservation groups, non-government organisations, environmental consultants, leading WA scientists and researchers, as well as the State and Commonwealth governments.

This independent assessment demonstrated the need to better coordinate research efforts to fill biodiversity knowledge gaps. It revealed the need for an independent institute to meet the needs of industry and government in a cost effective way.

WHAT DO END USERS WANT?

ACCESS BIODIVERSITY KNOWLEDGE TO MAKE MORE INFORMED DECISIONS

- Scientific data is of high quality and fit for purpose
- Information is easily accessible and relevant

FOCUSED, RELEVANT AND COST EFFECTIVE RESEARCH

- Reduce duplication and cost
- Leverage expertise and collaboration
- Enable sharing of research findings

UNDERSTAND THE NATURE AND DISTRIBUTION OF WA BIODIVERSITY

- Determine conservation status of species
- Assess potential impacts of planned activities

RESTORE AND REHABILITATE ECOSYSTEMS AND LANDSCAPES

- Better understand local issues
- Consider landscape scale impacts
- Develop criteria for restoration standards

REDUCE THREATS TO ECOSYSTEMS

- Understand actions and events that link organisms to the environment
- Mitigate processes and threats to ecosystems

HOW DO WE HELP?

GOVERNMENT

- Support the streamlining of environmental approvals to make the process more effective.
- Deliver independent science to facilitate better policy decisions.
- Provide scientific information so regulators can be confident that approvals and land management decisions adequately protect biodiversity without unnecessarily restricting development.
- More transparency in decisions leads to greater public confidence.

INDUSTRY

- Provide a single point of access to multi-disciplinary research expertise and independent biodiversity information.
- Help developers gain confidence about adequately managing risks associated with the approvals process, cost-effectively managing environmental monitoring and management commitments.
- Support industry to achieve certainty around completion and restoration obligations and boost community confidence in their ability to conduct enterprise without damaging important environmental values.

FUNDERS

- Bring leading researchers together to address collective industry issues.
- Help optimise research funds because we are aligned to the State's biodiversity priorities.
- We are the 'go to' place for large scale biodiversity issues.

RESEARCHERS

- Provide collaborative research opportunities.
- Optimise funding opportunities, research outcomes and impact.

COMMUNITY AND CONSERVATION ORGANISATIONS

- Enable transparency in decision making by providing independent biodiversity research data to government and industry.
- Help lift public confidence in the process of environmental policy, planning, management and regulation.

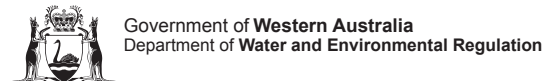


SUPPORTED BY INDUSTRY, GOVERNMENT AND COMMUNITY

As an independent institute, we have strong partnerships with industry and lead associations in Western Australia and research connections nationally and internationally. This means we can better leverage our collective biodiversity knowledge to deliver world-class science.

We were established in 2015 with funding from the Government of Western Australia, in partnership with leading universities and research institutions. We have access to the State's top capabilities in a multitude of disciplines within biodiversity science.

IN PARTNERSHIP WITH LEADING RESEARCH ORGANISATIONS





DELIVERING A RETURN

ON INVESTMENT

INDEPENDENT AND OBJECTIVE SCIENTIFIC RESEARCH TO INFORM POLICY DECISIONS

Our independent status allows us to provide access to high quality, unbiased research and credible data that contributes to developing sound policy and management decisions.

We are funded and supported by government as well as a range of private organisations. Our wide network and sound partnerships allow us to remain objective about research projects. We have a strong governance structure that ensures that our research is collaborative and undertaken without bias.

RIGOROUS BIG PICTURE THINKING TO DELIVER SPECIFIC AND LOCAL SOLUTIONS

Our collaborative activities are underpinned by big picture thinking that deliver specific and local solutions to assist government and industry make better land use decisions.

This helps boost public confidence in decision making whilst protecting conservation values that support sustainable economic development, tourism and the creation of jobs in WA.

REDUCE THE COST OF RESEARCH THROUGH COLLABORATION AND INFORMATION SHARING

We deliver well-designed and cost effective research projects by bringing together leading expertise and connecting you to the right skills.

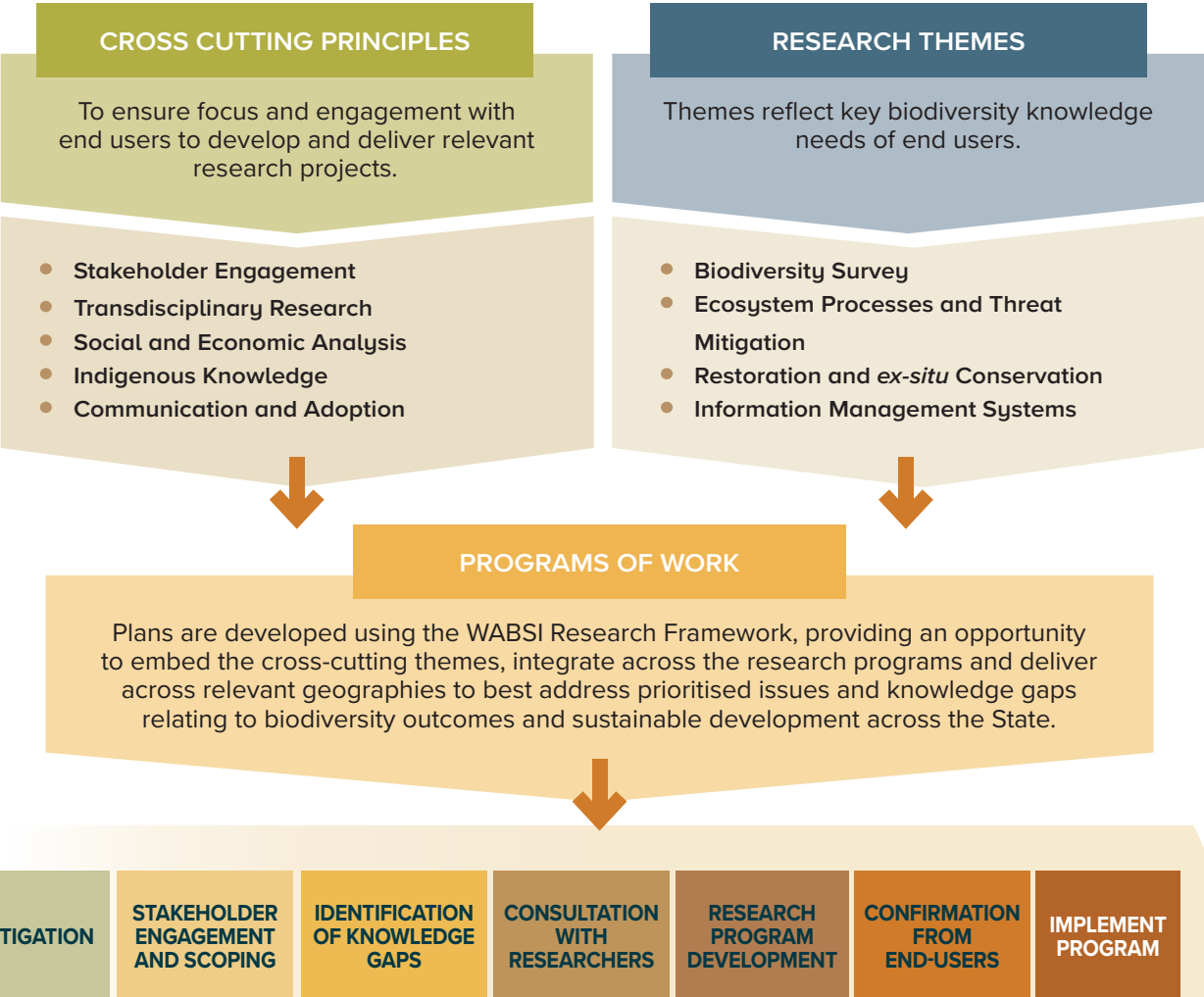
Better coordination means reducing research where information already exists and better collaboration reduces time and cost, achieving project efficiencies.





ALIGNED WITH WESTERN AUSTRALIA'S BIODIVERSITY RESEARCH PRIORITIES

RESEARCH FRAMEWORK





CAPABILITIES AND GOVERNANCE



COLLECTIVE RESEARCH EXPERTISE

Our strength is the joint wealth of multi-disciplinary scientific skills across our partners. We bring together the State's top biodiversity expertise to any project. A small executive team helps coordinate the research effort.

📍 View our website for details: wabsi.org.au

BOARD OF DIRECTORS

Our strong governance framework:

- Guarantees that we focus on addressing the knowledge needs of end users.
- Places Western Australian biodiversity research capability at the forefront of global biodiversity scientific endeavour.
- Ensures that optimum resources are allocated to scientific endeavour, rather than on administration.

COLLABORATION, LEVERAGE AND INTEGRATION COMMITTEE

This is a sub-committee of the Board with representatives from each of our research partners. It advises on areas of prospective research collaboration, makes recommendations on project proposals and identifies relevant grant and research funding programs for participation.

PHOTO ACKNOWLEDGEMENTS

Our thanks to the following for contributing the images used in this document:

- Department of Biodiversity, Conservation and Attractions
- Megan Hele
- Lesley Gibson
- Ashley Sparrow
- Urban Development Institute of Australia
- Lochman Transparencies
- Alcoa
- Botanic Gardens and Parks Authority
- Hanson Australia
- Chamber of Minerals and Energy
- Iluka Resources
- CSIRO – Suzanne Prober
- Environmental Protection Authority





WABSI.ORG.AU

PROUDLY SUPPORTED BY:

